

Do you have concerns about...

- How your child's speech is developing
- How your child is learning
- How your child sees or hears
- How your child plays/interacts with other children
- How your child moves his/her body and/or uses his/her hands for daily tasks
- How your child reacts to difficult situations or transitions

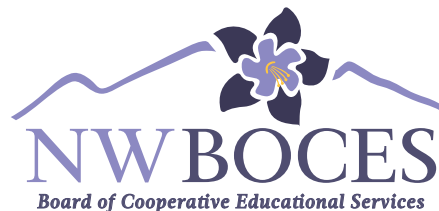
Child Find screenings can answer many questions about your child's development and learning.

Northwest Colorado Board of Cooperative Educational Services (NW BOCES) is a cooperative service agency providing special education, professional learning, and other services to its member school districts.

*Steamboat Springs
Hayden
South Routt
West Grand
East Grand
North Park
Moffat County*

Our Mission Statement

Through the cooperative efforts and services of NW BOCES, school districts will improve student achievement and maximize resources.



325 7th Street | P.O. Box 773390
Steamboat Springs, CO 80477
(970) 879-0391
www.nwboces.org



Northwest Colorado BOCES Child Find

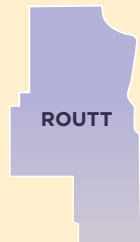
Child Find, a program of the Northwest Colorado BOCES, in partnership with *Steamboat Springs, Hayden and South Routt school districts*, is intended to identify children who might need extra support in school. Child Find screenings are available at no cost throughout the year.



Who Can Refer a Child for a FREE Screening?

- Parents
- Preschools
- Child Care Providers
- Doctors/Nurses
- Department of Human Services

The Routt County Child Find screenings are available for children who live within the Steamboat Springs, Hayden and South Routt school districts.



For children ages 3-5, contact Northwest Colorado BOCES Child Find Coordinator at: (970) 879-0391 ext. 325

For children ages birth to 3, contact Horizons Child and Family Services at: (970) 871-8558

For children 5-21, contact your child's neighborhood school. Many families speak with their child's teacher first.
Soda Creek Elementary: (970) 879-0652
Strawberry Park Elementary: (970) 879-7550
North Routt Community Charter School: (970) 871-6062
Hayden Valley Elementary: (970) 276-3756
South Routt Elementary: (970) 638-4558

OUR Services

Screening

Developmental screening in all areas including speech/language, fine and gross motor skills, learning, hearing/vision and social adaptability.

Educational Support

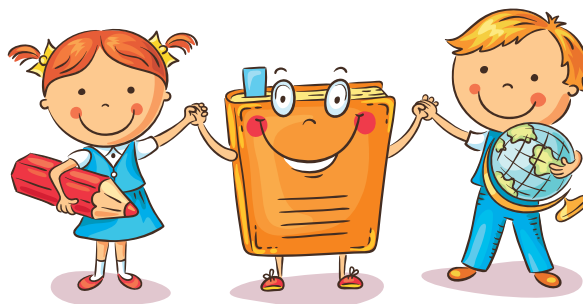
Intervention support for specific educational concerns; referral to school district for targeted evaluations for children who may require an Individualized Education Plan (IEP) and special education support services.

Consultation

Information provided to parents about child development, behavior management and community resources.

Community Referrals

Information and referrals to community resources which provide a variety of services, including preschool programs.



Child Find Teams May Include:

- Parents
- Child Find Coordinator
- Speech/Language Pathologist
- Early Childhood Special Educator
- Occupational Therapist
- Physical Therapist
- School Psychologist
- Hearing Specialist
- Vision Specialist
- Registered School Nurse



More information and child find referral form can be found at www.nwbores.org