



Northwest  
Colorado BOCES

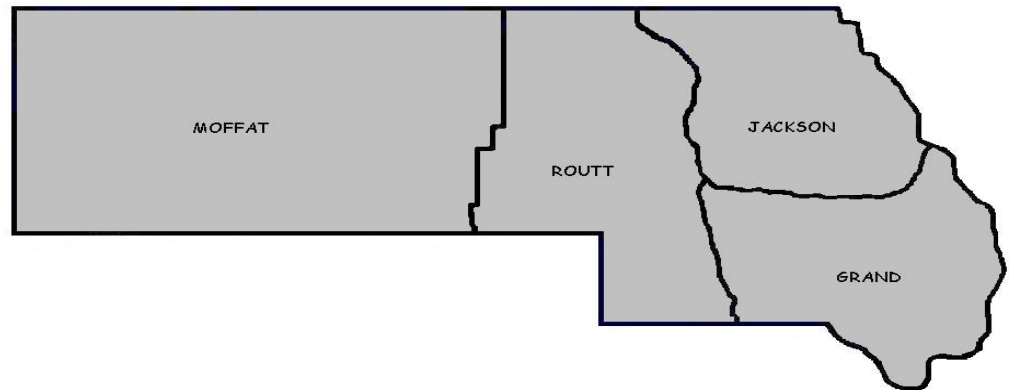
[www.nwboces.org](http://www.nwboces.org)

325 7th Street

P.O. Box 773390

Steamboat Springs, CO 80477

Phone: 970-879-0391



Northwest Colorado Board of Cooperative Educational Services

## Programs & Services Guide

### *Our Mission Statement:*

*Through the cooperative efforts and services of NW BOCES, school districts will improve student achievement and maximize resources.*

#### **BELIEFS: We\* believe that...**

- ⇒ All students can learn.
- ⇒ All students are entitled to a quality and appropriate education.
- ⇒ All students in all districts have equal value.
- ⇒ Student needs drive decision making.
- ⇒ Districts and students benefit when we are enterprising, adaptable, and creative to better accomplish our mission.
- ⇒ Cooperative, collaborative and supportive relationships enable the BOCES to focus on our mission.

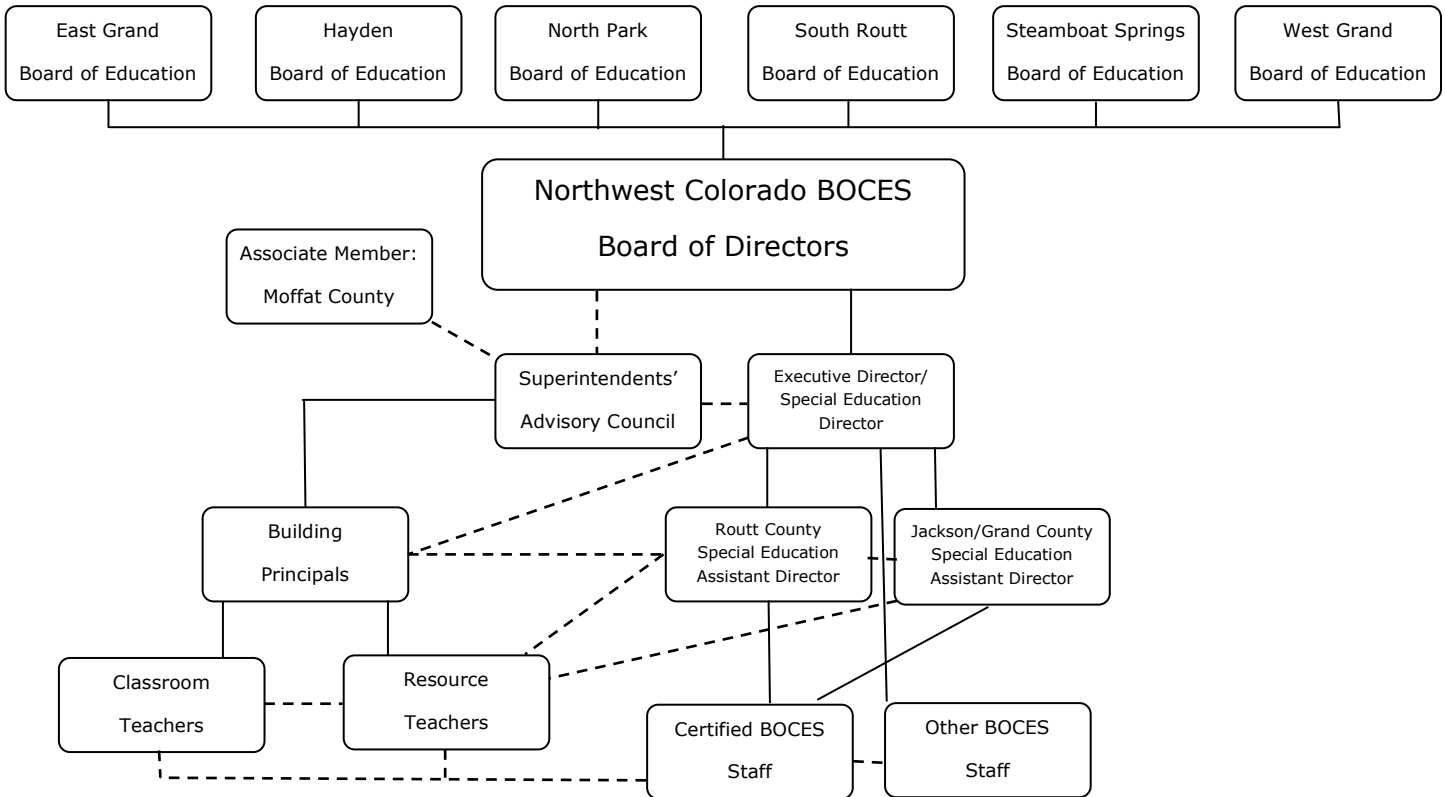
*"We" is defined as the educational community, including NW BOCES member districts, staff members, students, parents, and community members.*

#### **END RESULTS: As a result of our efforts...**

- ⇒ By increasing the effectiveness of all district and BOCES staff members, we will enhance student achievement.
- ⇒ The needs of all student populations (e.g. Students with disabilities, English Language Learners, Students who are gifted, etc.) will be addressed in a cost-effective, appropriate, and meaningful manner.
- ⇒ We will utilize economies of scale by cooperative program development and purchase of goods and services.
- ⇒ We will support our staff and member districts through effective leadership, efficient operations, and accountability.

## Administrative Organization:

In the organizational structure of the unit, it is recognized that geographic area and low population density within the area, requires a several tiered administrative structure to establish and maintain supervisory and administrative control of programs. Contact information for all BOCES employees and the Board of Directors can be found on our website. The following chart illustrates the staff organization patterns of NW BOCES:



## SPECIAL EDUCATION

- ⇒ Northwest Colorado Board of Cooperative Educational Services (NW BOCES) is an authorized agency under Colorado statutes. We are one of twenty BOCES in Colorado. We are the designated special education "Administrative Unit" for our six member districts: **East Grand, Hayden, North Park, South Routt, Steamboat Springs, and West Grand**. This means that we are responsible for special education in these school districts. We provide oversight of special education and compliance with state and federal special education mandates. Moffat County School District is an Associate Member participating in many of our non-special education programs.
- ⇒ We employ Special Service Providers who work with special education students in member district schools. These service providers include Occupational Therapists, School Psychologists, Speech Language Pathologists, Teacher of Visually Impaired, Teacher of Deaf and Hard of Hearing, and Physical Therapist.
- ⇒ Our six member school districts share an Executive/Special Education Director and two Regional Assistant Special Education Directors, who work with all special education staff including district employees (special education teachers and aides) and BOCES employees (Special Service Providers) to provide mandated services to students with disabilities at no cost to parents. The process begins with identifying special education students through screenings including "Child Find", referrals and evaluation. Once students are identified as eligible, special education services are provided by the appropriate staff.

**Please explore our website at [www.nwboces.org](http://www.nwboces.org) to learn more.**

**In addition to special education services, NW BOCES membership provides:**

- ⇒ Economies of scale through collaborative programs and services
- ⇒ Efficiency in reducing duplication of programs, staff and services among member districts
- ⇒ Programs and services to meet the needs of member districts
- ⇒ Opportunities for inter-district communication and sharing in areas beyond specific programs and services
- ⇒ Equality in educational opportunities for children enrolled in districts of diverse sizes
- ⇒ The ability to participate in regional programs while maintaining local autonomy



⇒ **Professional Development**— NW BOCES offers professional development for teachers, specialized staff, aides and administrators. See the Professional Development link on our website for current offerings. In conjunction with Colorado Mesa University, we provide graduate credit for our workshops and we are also authorized to issue Recertification Credit. We offer an **Alternative Licensure** program for non-certified teachers to become licensed and an **Induction & Mentoring** program for teachers holding an Initial License. We also offer a **Principal Roundtable** for induction of new administrators as well as training and networking for experienced administrators.

⇒ **Other Programs and Services include—**

- ⇒ **Community Day Treatment Programs** (Routt and Grand Counties)
- ⇒ **Grant Writing and Coordination**
  - ⇒ **Investing in Innovation (i3) SEED Grant**
  - ⇒ **Math Science Partnership (MSP) SUMMIT Grant**
- ⇒ **Gifted & Talented** (plan coordination for all districts, dispute mediation)
- ⇒ **Student Workshops** (Model UN, Science Explorers, Student Advocate Program)
- ⇒ **Vocational Education—Carl Perkins Grant Consortium** (program planning and Plan submittal)
- ⇒ **Routt County CEO Program**
- ⇒ **Technology Integration**
- ⇒ **Media Center** (assessments & other materials for district staff use)
- ⇒ **Section 504 Coordination**
- ⇒ **Extended School Year Services** (for certain eligible special education students)

**The programs, activities and employment opportunities offered by the BOCES are offered regardless of race, color, ancestry, creed, sex, sexual orientation (which includes transgender), religion, national origin, marital status, disability or need for special education services.**